



Issue 64 June 2016

CHIPSHOTS

The Lopez Island Golf Club Newsletter

Inside Shots & Tight Lies

Course Report	2-3
Reports from Sahalee	4-7
Twilights	8-10
Clubhouse Corner	11
New Members	12
Work Day	13
Summer Golf Lessons	14
Upcoming Events	15

Course Report

Highlights from the recent Greens Committee Meeting.

Irrigation Update: Mark R., Lars and Don L. did a thorough review of the system. After discovering several areas with too many sprinklers on one controller, they split up some areas, adjusting the zones to create more water control at each zone. This will also save water.

Fairway 1 improvements: A plan is afoot to add irrigation to the first fairway. This will entail trenching and installing 17 sprinkler heads. We have a lot of the piping needed. September is a good time for this project which will add a more welcoming look to the beginning of the course.

Width of Fairway Mowing: Lars and Benni have cut back the rough an additional 10-15 feet to widen the fairways.

Speed of Greens: A recent reading of the greens indicated a Stimp rating of 9.5-10. Discussion ensued about aiming for 11.

Carts on #9/18: In an attempt to grow some grass, we're closing the approaches to the #9 and 18 tees to carts.

Aprons: Lars plans to add some aprons to a few of the greens.

Ponds: We need to do more research before deciding how to treat the weeds and algae in #3 and #4 ponds. Benni is following up with chemical analysis.

Equipment: Lars is researching the purchase of a new (to us) sprayer as well as a rotary fairway mower.

If members have concerns or questions about course maintenance activities, please contact Mark Reisinger, the Board member in charge. Mark can be reached at mark.reisinger@lopezislandgolf.com or 206-351-7543.

Course Report Continued

Question: What is up with all those new flags?

Answer: The secondary flags on the poles are an indication of the pin location on the green. If the small, lower flag is low on the pole like the photo on the left that means the pin is located near the front of the green, in relation to your approach. In the picture on the right the flag is in the middle of the pole; therefore, the pin is located in the center of the green.



Practice Day at Sahalee

By Bob Gerfy

The KPMG Women's PGA Championship was held in early June at the Sahalee Country Club by Lake Sammamish. Joyce and I went there on Wednesday, a practice day. We've been to golf tournaments before, but never a practice day. There were no crowds, no shouts of "Get in the hole!" A peaceful day.

Players were putting, chipping, pitching and sanding (?) in dedicated areas. At the range, Ariya Jutanugarn and her coach were taping a Golf Channel segment on how she hits her 2-iron. Lydia Ko seemed to be spending more time chatting than hitting balls. Michelle Wie was mentally playing the course, hitting driver, then a distance club, then a short pitch while her caddy cued her: "Driver with a 10-yard fade," "draw an easy 6 iron", etc. This is an intelligent way to practice.

On the course were two- and threesomes. They would hit one or two shots through the green, then hit from a bunker, from tall grass — wherever their caddies tossed a ball. On the green, the caddies tossed round disks on the various markers for tournament pin positions. Players putted to these from different directions. Caddies nonchalantly scooped up balls with pitching wedges - scoop, tap up, catch. They seemed to be running the show.



All in all, it seemed to be a tedious workday for the pros. Except for Angela Stanford's group. On the 9th tee, hitting first, Angela asked her companions, "Is this a hundred-dollar hole?" The other two chimed in, "Sure." The bet was on.

More photos from Practice Day at Sahalee



Marshalling at Sahalee

By Chris Bangsund

KMPG LPGA Championship June 9-12, 2016, Sahalee Golf Course

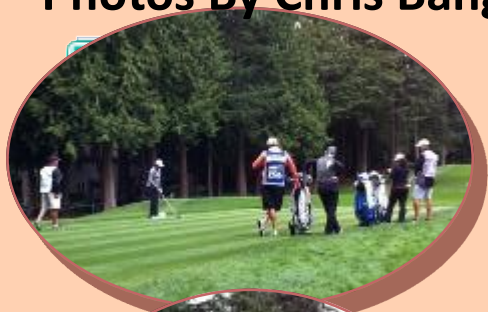
In October, I talked a girlfriend of mine into signing up to marshal at the Ladies Championship Tournament. At the time, I had no clue that all **The Greats** would be there. Even at that, there is no one that I think has done more in the recent decades for Ladies Golf than Annika Sörenstam. Mama Mia, can you imagine my delight when she was there giving autographs! She signed a visor that I will treasure always and I kind of rubbed my shoulder against hers during the picture taking. I felt this incredible **ZAP** and I'm sure she was passing some of her talent onto me.....watch out ladies!

Ahhh, I digress....marshalling. Marshalling duties varied from crowd control, signaling the flight of the ball to marshals farther up the fairway, making sure there are no lost balls and working the gates for easy access from green to tee box for the players. It was a fun experience even with the inclement weather. To be inside the ropes as they all came through was awesome. It was truly the "Who's Who" of ladies golf. Michelle Wie, Stacy Lewis, Lexi Thompson, Christina Kim, Anna Nordqvist, Suzann Pettersen, Brittany Lincicome, Inbee Park, Paula Creamer, Ariya Jutanugarn, Cristie Kerr, Morgan Pressel, Karrie Webb, Julie Inkster, Caroline Hedwell and of course Brooke Henderson who took the win from Lydia Ko in a sudden death playoff. Even Laura Davies at age 52 was there and she did remarkably well. Sahalee is a tough course, with its narrow tree lined fairways, multi-level greens and hazards galore. I haven't played it...Dick has and he said it's the only course that he's played where he was on the green and then lost his ball putting into the water. I rolled my eyes when he said that thinking of course it speaks to his putting ability. Now that I've seen the difficulty of the course, I'm not so sure.



Photos while Marshalling at Sahalee

Photos By Chris Bangsund



Lexi Thompson
In the pink

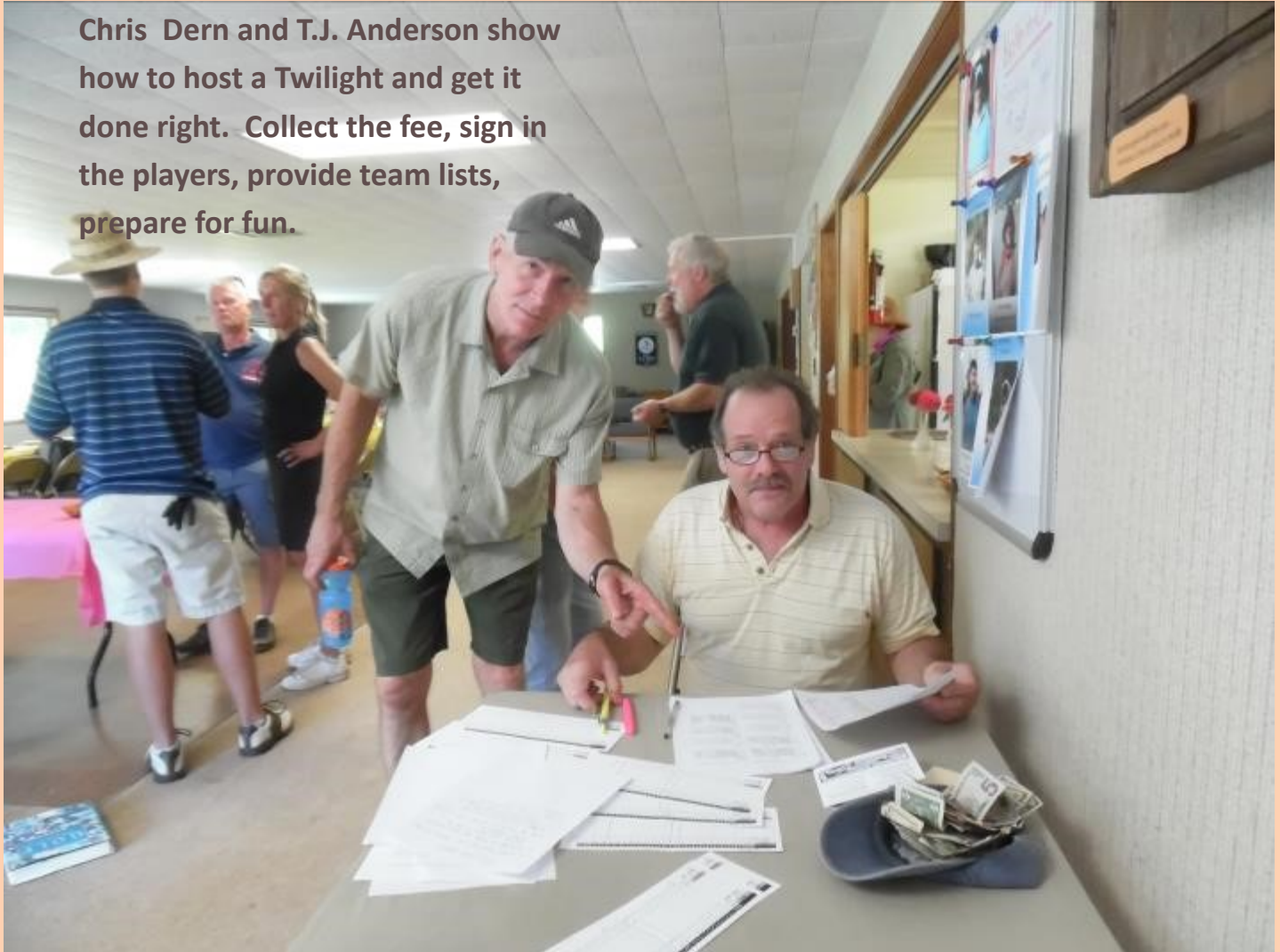


Brooke Henderson



Rare Friday Night Twilight - June 3rd

Chris Dern and T.J. Anderson show how to host a Twilight and get it done right. Collect the fee, sign in the players, provide team lists, prepare for fun.



Minus pictures of the actual game, it was reported that everyone had both fun playing and enjoyed a great potluck dinner. If you are considering whether or not to take on the challenge of a Twilight event, take it from these two, it is a piece of cake even if you initially forget to put yourself on a team. There is still one Twilight event without hosts this season, Sunday August 28th. There is plenty of time to come up with a theme, decide on the meal and figure out a game. Plus, hosting is a great way to get lots of work hours out of the way in one fell swoop. For more information about hosting a social event contact Mary Ellener marytobacco@comcast.net or Jodie for details.

Southwest Themed Twilight on June 12th



Mulligan Madness Twilight June 26th



Report by Bev Smith, photos by Jim Smith

It was a gorgeous evening for our Twilight Event, which featured two new competitions. One was a closest to the pin on Hole #4, hitting from the drop zone. The other was an effort on hole#8 to hit THE TREE for an automatic birdie. Two of the seven teams accomplished this, thanks to Barbara R. and Charlie J. Thirty members participated and had a wonderful time.

Winners were Lars, Miki S., Dennis M., Ian L., and Jon A. Second place in a scorecard playoff went to Ed C. Lynn H. Pat G., and Jim P. Third Place was Judy W., Ron M., Dick R. and Lauren S. Closest to the pin were Lynn H. at three feet and Vaughan at 6 feet. Dinner was pizza, Caesar salad and ice cream sundaes.



Clubhouse

Corner

McConaghy Tourney

Men

1st Bill White

2nd Ed Gutkowski

Women

1st Mary Brown

2nd Pat Goodfellow

JUNE ACES

Judy Whitney

Ron Metcalf

Congratulations

Terry Crowley

on your Hole-in-One

on #4 , June 25th



Welcome New Members

This page remains blank this month because we have not acquired any new members. Here is where you can help. Do you know of any new Lopezians, recently retired Lopezian or anyone who would enjoy the benefits that club membership entails? If so bring them as a guest to a Twilight game and introduce them to club activities, invite them out for a game, or simply ask them if they have considered membership in the golf club. We are still down members from last year and have plenty of room for more. With a course in as good a shape as this one is becoming, maybe it is time to reintroduce some friends to what we offer.

If you would like more details on both the Trial Membership or the Certificate Membership stop in and see Jodie for details.

June Work Day



Summer Golf Lessons



During three sunny days at the end of June, eight kids and 1 adult took advantage of golf lessons provided through the Lopez Island Family Resource Center and taught by three generous LIGC members with lots of golf wisdom to share. Jimmy G., Gary B., and Steve B. split up the tasks of leading these golfers through the fundamentals of the game. The student' skill sets ranged from brand new to golf to "some experience a while back".

UPCOMING EVENTS

Remember to check out the **EVENTS CALENDAR** in the **DIRECTORY** on the **WEBSITE** for specifics on all the events. <http://lopezislandgolf.com/>

July 10th Twilight Event

3:30pm draw for teams-4 pm tee off

Bring your favorite 3 golf clubs
(NO putter allowed)

* Baby Back BBQ Pork Ribs

(Beef Spare Ribs by prior request)

* Potluck sides & desserts

* BYOB & place settings

* \$5 for Ribs & Game

Sign up by July 7th limited to 40

Sponsored by Herb & Dodie Schiessl & Chris Bangsund

JULY

4 Independence Day

5 Fall Ringer Begins—Ladies

6 Business League 5:00

7 Fall Ringer Begins -Men

10 Twilight 4:00

24 Twilight 4:00

27 Workday 9:00

Chipshots: The Newsletter

June 2016 Issue 64

Lopez Island Golf Club

589 Airport Rd.

Lopez Island, Wa. 98261

(360) 468-2679

Original Design by Steven Levy and
Chris Bangsund

Producer: Jodie Snapp

Editor: Joyce Kruithof

